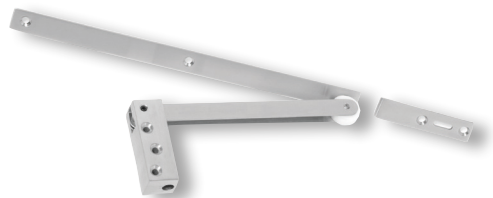


Briton

Door Selectors

Door control



Briton Door Selectors are designed for use on pairs of doors where the inactive leaf is required to close before the active leaf. The door selector is suitable for double rebated doors and fire doors. Door coordination is a basic requirement for all self-closing pairs of doors that are rebated or have astragals.

The Briton Door Selector is a medium-duty commercial product for use in projects with double doors such as electrical cupboards, duct doors or plant rooms.

Features

- Surface mounted
- Non-handed
- Manufactured from stainless steel
- Models to suit pairs of doors 1800mm to 2400mm wide
- 4000 Series suitable for use with exit devices
- The 10 year warranty provides specifiers and users with assured quality and performance

Specification guide

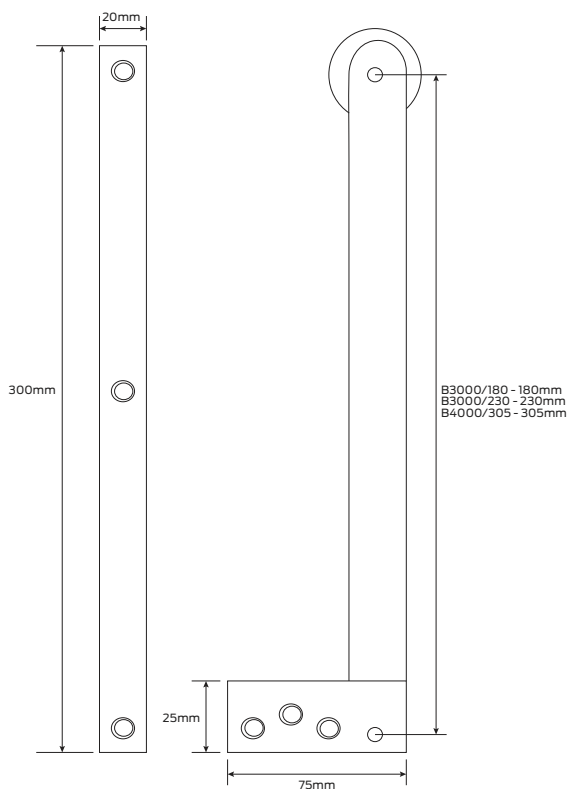
Model

For pairs of doors to 1800mmB3000/180/
 For pairs of doors to 2400mm B3000/230/
 For doors fitted with exit hardware B4000/305/

Finish

Satin stainless steelSSS

1. Model
 Select the desired model e.g. Suitable for doors with exit hardware fitted B4000/305
2. Finish
 Select the desired finish e.g. Satin stainless steel B4000/305/SSS



Specifications

Door type	Timber or metal
Door size	Refer to specification guide Note: Inactive leaf is not to be larger than 1000mm
Material	Stainless steel
Finish	Satin stainless steel
Warranty	10 year mechanical

Dimensions

Body length	75mm
Body width	32mm
Body depth	19mm
Arm length: Series 3000	180mm and 230mm
Arm length: Series 4000	305mm

Mounting detail

